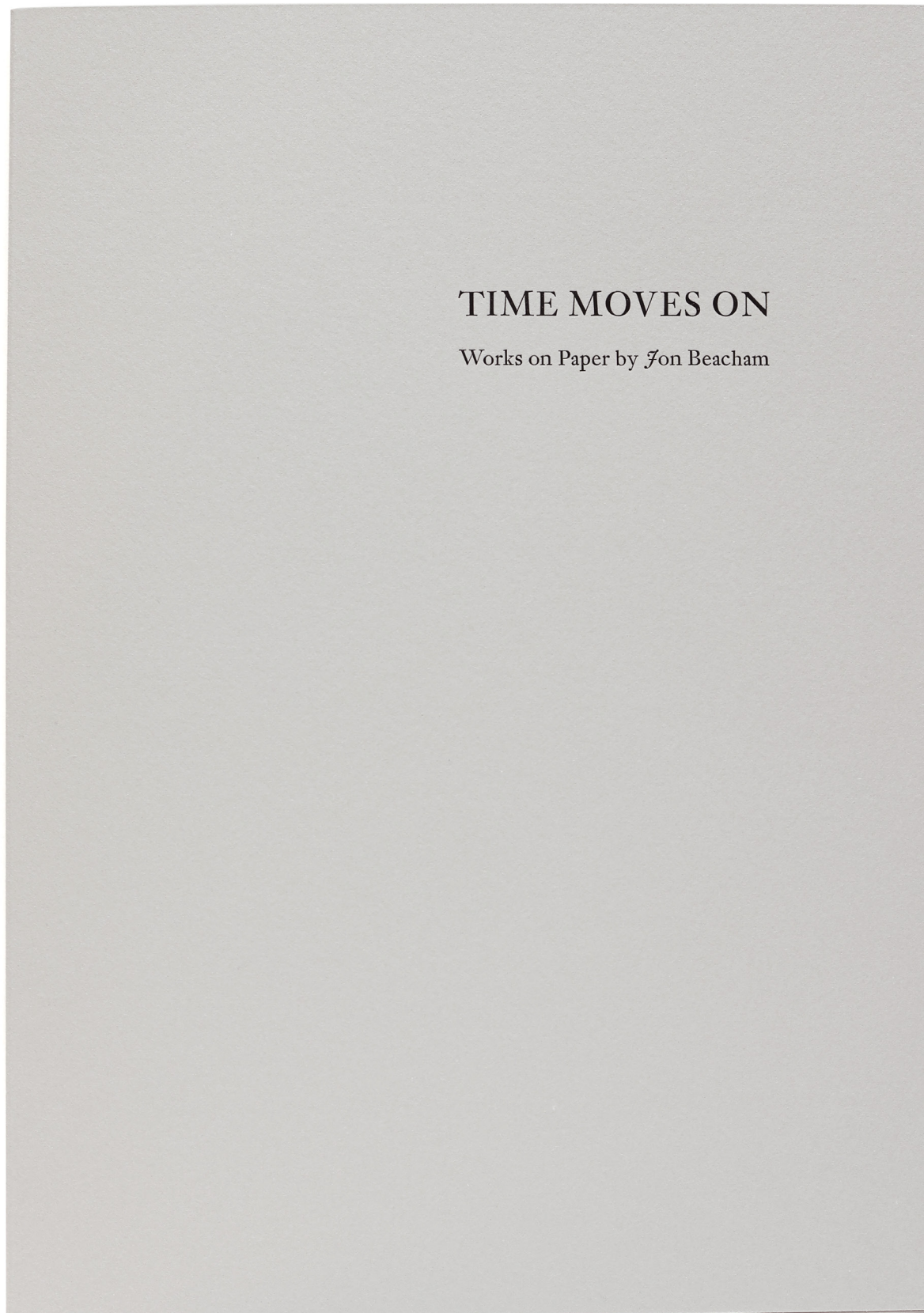


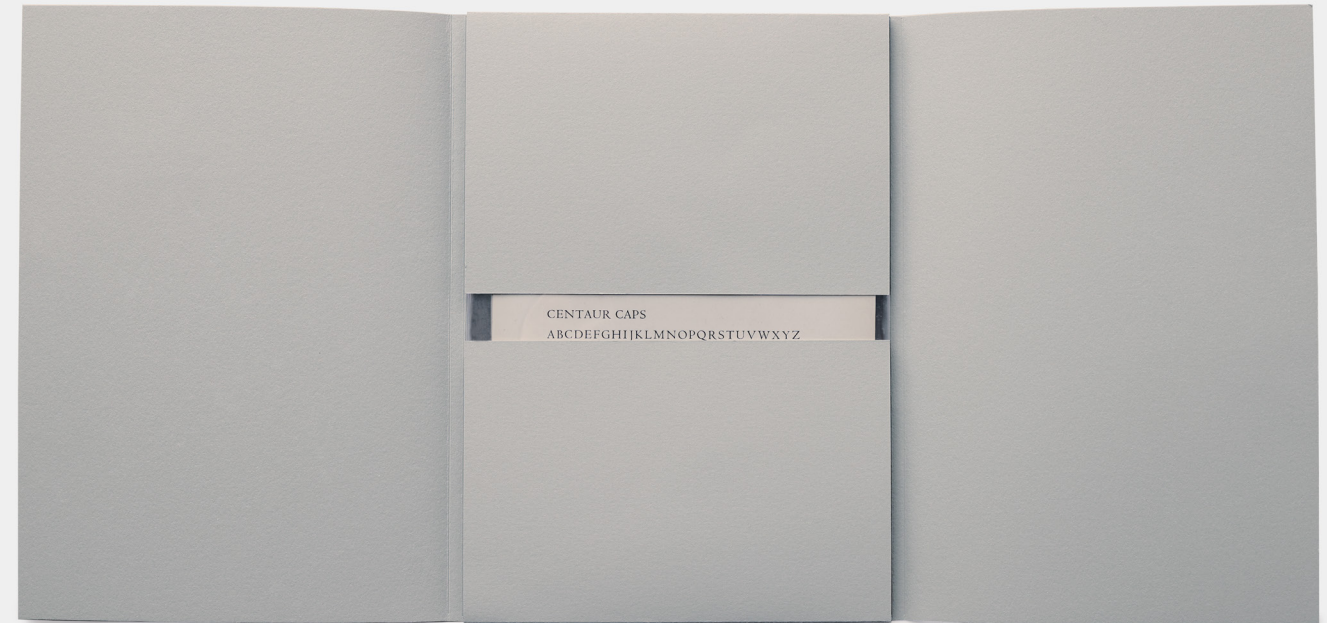
TIME MOVES ON

Works on Paper by *Fon* Beacham



TIME MOVES ON

Works on Paper by Jon Beacham



TIME MOVES ON

Works on Paper by Jon Beacham

Edition of 10

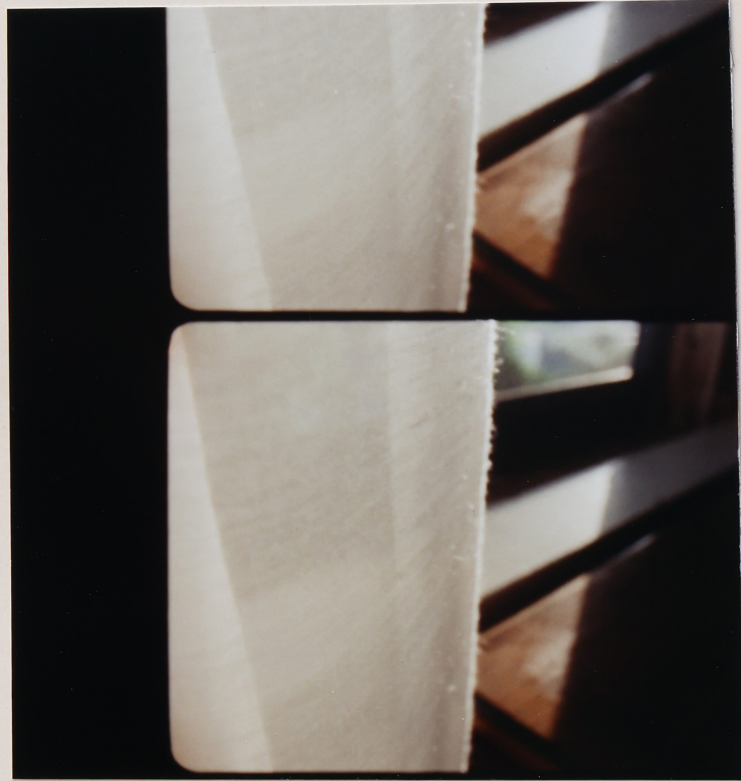
\$1250

Time Moves On is a collection of works on paper by Jon Beacham (b.1979, Cleveland), combining letterpress printed texts with original photography and collage.

The edition consists of eight unique works on paper individually housed in archival mylar sleeves. They are held in a letterpress printed enclosure with opening flaps on all four sides with a letterpress printed spine. The work can sit on a bookshelf or be stored flat. The outer enclosure measures 7 1/8 x 10 1/8 inches.

The collage imagery consists of darkroom C-prints printed by Beacham from still and 16mm negatives, as well as found material. Each group of work contains different artwork in combination with the text, making each edition unique. All texts were printed from hand set metal type. The typefaces used throughout include Janson, Centaur, Dante, Walbaum, Palatino, and Michelangelo.

To purchase, or for more information, contact the press at info@thebrotherinelysium.com.



TIME MOVES ON

ARTIST'S STATEMENT

These pieces crystalize recurring themes in my work, bringing together the disciplines of letterpress printing, photography, and collage. Images from silent 16mm films make their way onto paper accompanied by typographic specimens and text fragments. Sometimes in direct relation, and sometimes in enigmatic references. There is a looseness in the combinations—images resurface from past works or publications. The life of these images continues. The process of working spontaneously with the material is a way of understanding time, completion, and the owning of one's images to contain multiple expressions that remain open through lived experience. The interest in the act of making work, as opposed to its end, is the focus.

The small format edition provides a portable exhibition, a concept that I have previously referred to in my trade edition books which constitute specific bodies of artwork designed to be in people's personal libraries. This is a context I find most intimately connected with the viewer; in direct communication opposed to other contemporary presentation modes that fall short of holding the work.

On the materials:

This body of work first started when I came upon a used book in a book barn about canals and inland waterways in the United States. The book was published in 1909, and was filled with image plates printed on a very early coated paper stock. This paper has a color and tone which I had never seen before, and became a perfect surface for the feel for these works. The back of the plates are blank, and they provide the surface for each work in the edition. I was able to source multiple copies of the book to complete the full edition. The material intrigued me as a surface, and a tone, especially in a time when the production of materials (paper specifically) has sharply declined, and the availability of materials and tools that were once common and dependable is now often compromised. Using material that already exists in the world has been a long standing practice in my work, and became a catalyst for this specific group of work.

ABOUT THE BROTHER IN ELYSIUM

The Brother In Elysium is a publishing imprint and studio run by the artist Jon Beacham, currently based in Holyoke, Massachusetts. The press issues books and editions using the forms of letterpress printing with hand set metal type, offset lithography, and hand bookbinding; and incorporating photography, collage, and 16mm film. It is a context for publishing books by artists and writers with a focus on collaboration, with recurring themes of self-determination, sense of place, and dialogues across time. thebrotherinelysium.com



Buildings that have disappeared or
been so altered as to be denatured



A
a b c d e
B C D E F G H I
f g h i j k l m n
J K L M N O P Q R
o p q r s t u v
S T U V W X Y
w x y z
Z



CENTAUR CAPS

ABCDEFGHIJKLMNOPQRSTUVWXYZ

1234567890&ÆŒ



ANOTHER TIME IN FRAGMENTS

I had just come back from a long lonely trip
to where I'd been born in the Dakotas. I don't
remember if I shot anything on that trip—I think
not—but I knew I was into a film. One night after
I was back I stayed up all night and listened to
the requiem masses being played on the radio,
especially Mozart's. It was so beautiful.



STUDIES OF TREES IN WINTER



TIME MOVES ON

Time Moves On is a collection of works on paper combining letterpress printed texts with original collages. The images are darkroom C-Prints made from still and 16mm negatives, and found material. Each edition is unique with different artwork. Texts are printed from hand set metal type including Janson, Centaur, Dante, Walbaum, Palatino, and Michelangelo.

Requiem text is by the filmmaker Bruce Baillie. All other works by Jon Beacham. Completed in the Fall of 2023. Edition of 10.